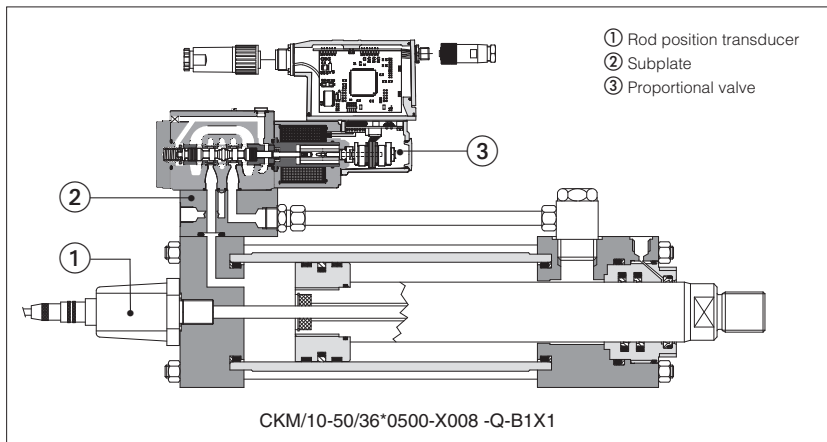


Servocylinders type CK* with built-in position transducer

to ISO 6020-2 - nominal pressure 16 MPa (160 bar) - max 25 MPa (250 bar)



CK* electrohydraulic servocylinders have engineered double acting construction, designed to suit the requirements of industrial applications: top reliability, high performances and long working life.

Their compact construction allows high flexibility for use in all applications. The rod position transducer ① is well protected against shocks or external dirt, and maintenance is reduced to a minimum.

- Derived from cylinders series CK according to ISO 6020-2, **see tab. B137**
- Integral position transducers: Magnetosonic analog or digital, Potentiometric and Inductive
- Bore sizes from **40 to 200 mm**
- Rod draining and air bleeds supplied as standard
- Available with incorporated subplates ② for on-board on/off or proportional valves ③ to achieve the max hydraulic strength, fast response time and repeatability
- Attachments for rods and mounting styles, **see tab. B500**

For cylinder's choice and sizing criteria **see tab. B015**.



DVC Cylinder Designer

The configuration and options of CK* electrohydraulic servocylinders are easily selectable with the DVC software. Once the cylinder code is correctly defined using the configurator tool, the relevant 3D modelling and imaging are immediately available for the user.

1 MAIN CHARACTERISTICS OF TRANSDUCERS

Code	CKF	CKM	CKP	CKV
Transducer type	Magnetosonic, analog	Magnetosonic, programmable	Potentiometric	Inductive
Electronic conditioning	Integral	Integral	None	Separate
Linearity error (1)	< ± 0,03%	< ± 0,01%	± 0,1%	± 0,2%
Repeatability (1)	< ± 0,005%	< ± 0,001%	± 0,05%	± 0,05%
Max speed	1 m/s	2 m/s	0,5 m/s	1 m/s
Strokes	100 to 1000 (by increments of 100)	100 to 3000 (by increments of 100)	100 to 900 (by increments of 100)	100 to 1000 (by increments of 100)
Interface	Voltage 0 ÷ 10 V	Analog: 0 ÷ 10 V, 4 ÷ 20 mA Digital: SSI, CANopen, PROFIBUS DP	Voltage 0 ÷ 10 V	Voltage: 0 ÷ 10 V Current: 4 ÷ 20 mA
Typical applications	Sawing or bending machines	Steel plants, plastic and rubber	Various, compact construction	Simulators and energy
Temperature limits	-20°C to + 75°C	-20°C to + 75°C	-20°C to + 75°C	-20°C to + 120°C

Note: (1) percentage of the total stroke

2 MODEL CODE

CK

P / 10 - 63 / 45 * 0500 - S 2 0 8 - K - B1E3X1

**

<p>CYLINDER SERIES CK to ISO 6020 - 2, see tab. B137 See section [24] for other cylinder series</p> <p>ROD POSITION TRANSDUCER F = magnetosonic, see section [3] M = magnetosonic programmable, see section [4] P = potentiometric, see section [9] V = inductive, see section [10]</p> <p>INCORPORATED SUBPLATE, see section [21] 00 = without subplate 10 = size 06 20 = size 10 30 = size 16 40 = size 25</p> <p>BORE SIZE, see sections [6] and [11] from 40 to 200 mm</p> <p>ROD DIAMETER, see sections [6] and [11] from 28 to 140 mm</p> <p>STROKE, see section [1] up to 3000 mm</p> <p>MOUNTING STYLE, see sections [6] and [8] or [11] and [13]</p> <p>REF. ISO</p> <table border="0"> <tr> <td>X = basic execution</td> <td>MP1 *</td> <td>L = intermediate trunnion</td> <td>MT4</td> </tr> <tr> <td>C = fixed clevis</td> <td>MP3 *</td> <td>N = front flange</td> <td>ME5</td> </tr> <tr> <td>D = fixed eye</td> <td>MS2</td> <td>P = rear flange</td> <td>ME6 *</td> </tr> <tr> <td>E = feet</td> <td>MT1</td> <td>S = swivel with eye</td> <td>MP5 *</td> </tr> <tr> <td>G = front trunnion</td> <td></td> <td>Y = front tie rods extended</td> <td>MX3</td> </tr> <tr> <td></td> <td></td> <td>Z = front threaded holes</td> <td>MX5</td> </tr> </table> <p>*Not available for CKF and CKM</p>	X = basic execution	MP1 *	L = intermediate trunnion	MT4	C = fixed clevis	MP3 *	N = front flange	ME5	D = fixed eye	MS2	P = rear flange	ME6 *	E = feet	MT1	S = swivel with eye	MP5 *	G = front trunnion		Y = front tie rods extended	MX3			Z = front threaded holes	MX5	<p>Series number (1)</p> <p>HEADS' CONFIGURATION (2), see section [19] Oil ports positions B1 = front head X1 = rear head Cushioning adjustment position E3 = front head* * Enter E2 only for mounting style E</p> <p>OPTIONS (2) (3): Rod end, see sections [7] and [12] H = rod thread Rod treatment, see section [17] K = nickel and chrome plating T = hardening and chrome plating Oversized oil ports, see sections [6] and [7] D = front oversized oil port Y = rear oversized oil port Options for CKM: Analog output, see section [4] A = current output (4÷20 mA) V = voltage output (0÷10V) Digital SSI output, see section [4] Q = binary 24 bit R = binary 25 bit S = gray 24 bit U = gray 25 bit Fieldbus output, see section [5] C = CANopen P = PROFIBUS DP</p> <p>SEALING SYSTEM, see section [20] 2 = (FKM + PTFE) very low friction and high temperatures 4 = (NBR + PTFE) very low friction and high speeds 8 = (NBR + PTFE and POLYURETHANE) low friction</p> <p>SPACER, see section [14] 0 = none 2 = 50 mm 4 = 100 mm 6 = 150 mm 8 = 200 mm</p> <p>CUSHIONINGS, see section [18] (option 2 is only available for bores from 63 to 200) 0 = without cushioning 2 = front adjustable cushioning</p>
X = basic execution	MP1 *	L = intermediate trunnion	MT4																						
C = fixed clevis	MP3 *	N = front flange	ME5																						
D = fixed eye	MS2	P = rear flange	ME6 *																						
E = feet	MT1	S = swivel with eye	MP5 *																						
G = front trunnion		Y = front tie rods extended	MX3																						
		Z = front threaded holes	MX5																						

Notes:

- (1) For spare parts request always indicate the series number printed on the nameplate
- (2) To be entered in alphabetical order
- (3) Rod draining and air bleeds supplied as standard, see sections [22] and [23]

3 SERVOCYLINDERS TYPE CKF

3.1 Magnetosonic transducers - basic working principles

The magnetosonic transducer is composed by: a waveguide element ① fixed to the cylinder's body, a permanent magnet ② rigidly connected to the cylinder's rod and an integral electronics signal conditioning ③ located on the rear head.

The position measurement is based upon the magnetostriction phenomenon: the electronics signal conditioning ③ generates a short current pulse that travels through the waveguide ①. When this pulse meets the magnetic field of the permanent magnet ②, a torsional wave is generated and it travels back to the electronics signal conditioning.

The position of the moving magnet is thus accurately determined by measuring the elapsed time between the application of the current pulse and the arrival of the torsional wave, thanks to their constant ultrasonic speed. Sensor electronics signal conditioning transforms this measurement into the analogic output feedback signal.

The contactless construction of the position transducer ensures a long working life and allows its use even in hard environmental conditions (shocks, vibrations etc.) or high working frequencies.

The transducer can be replaced without disassembling the cylinder, providing a great advantage of easy and quick maintenance.

The sensor electronics is covered by a steel case ④ to prevent shocks or mechanical damages. The steel case is screwed to the rear head.

Magnetosonic transducers, particularly simple and cost-effective, makes the CKF servocylinders commonly used as alternatives to external absolute encoders or to potentiometric transducers.

3.2 Output signal

The transducer integral electronics supplies an analog voltage output $0 \div 10 \text{ Vdc}$ proportional to the rod position.

3.3 Transducer features

CKF are equipped with "MTS"'s magnetosonic transducers, whose main features are shown in the table at side.

3.4 Electronic connections

The 6 pin male connector M16 is located on the transducer rear head. The straight female cable connector ⑤ **SP-ST-CO-9131-D06-PG9** is included in the supply.

See the table at side for electronic connections.

3.5 Strokes

From 100 to 1000 mm by increments of 100 mm. If a not standard stroke is required, contact our technical office.

3.6 Cylinder features

See sections ⑥, ⑦ and ⑧ for sizes, mounting style and dimensions. See sections from ⑭ to ⑳ for materials and options.

3.7 Fluid requirements

CKF servocylinders are suitable for operation with mineral oils with or without additives (**HH, HL, HLP, HLP-D, HM, HV**), fire resistant fluids (**HFA** oil in water emulsion - 90-95% water and 5-10% oil, **HFB** water in oil emulsion - 40% water, **HFC** water glycol - max 45% water) and synthetic fluids (**HFD-U** organic esters, **HFD-R** phosphate esters). For the proper choice of the sealing system, in relation to the fluid characteristics, see section ⑳.

Recommended fluid characteristics:

- Viscosity: $15 \div 100 \text{ mm}^2/\text{s}$
- Temperature range: $0 \div 70^\circ\text{C}$
- Fluid contamination class: ISO 19/16 achievable with in-line filters at $25 \mu\text{m}$

3.8 Start-up notes

During the start-up it is necessary to bleed off the air from the servocylinder as indicated in section ㉑.

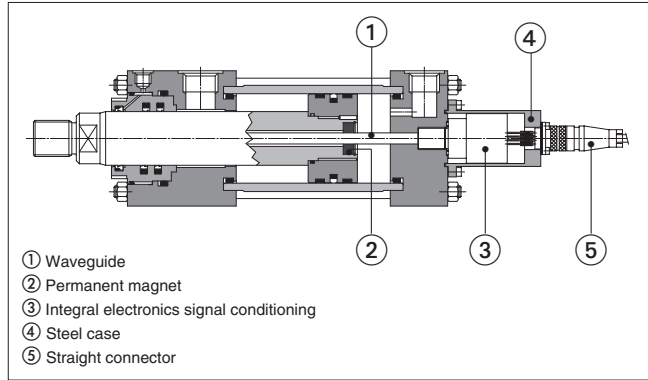
For other details refer to the start-up instructions included in the supply.

3.9 Warnings

Ensure that the servocylinder and wirings are kept away from strong magnetic field and electrical noise to prevent noises on the feedback signal. Check the electronic connections and switch-off the power supply before connecting or disconnecting the position transducer to avoid electronic damages.

It is recommended to connect the draining port, supplied as standard, to the tank without back pressure, see section ㉒ for details.

SERVOCYLINDER TYPE CKF



- ① Waveguide
- ② Permanent magnet
- ③ Integral electronics signal conditioning
- ④ Steel case
- ⑤ Straight connector

TRANSDUCER FEATURES

Power supply	24 Vdc ($\pm 15\%$)
Output signal	$0 \div 10 \text{ Vdc}$
Resolution	infinite, restricted by the output ripple
Linearity	$< \pm 0,03\% \text{ F.S}$ (min $\pm 100 \mu\text{m}$)
Repeatability	$< \pm 0,005\% \text{ F.S.}$
Output update frequency	$> 1,5 \text{ kHz}$
Temperature coefficient	$< 50 \text{ ppm}/^\circ\text{C}$
Operating temperature	$-20 \div +75 \text{ }^\circ\text{C}$
Connection type	6 pin connector M16 to DIN 45322
Protection degree	IP67 to DIN 40050
Shock resistance	100g (single hit) / IEC Standard 68-2-27
Vibration resistance	$5\text{g}/10 \div 150 \text{ Hz}$ / IEC Standard 68-2-6
Measuring range	100 to 1000 mm
Maximum speed	1m/s

ELECTRONIC CONNECTIONS

6 PIN female connector (to solder)	PIN	SIGNAL	NOTES
	1	Vout	Output - analog signal
	2	AGND	Gnd - analog signal
	3	NC	Do not connect
	4	NC	Do not connect
	5	V+	Input - power supply 24 Vdc ($\pm 15\%$)
	6	V0	Gnd - power supply 0 Vdc

SP-ST-CO-9131-D06-PG9
(Transducer view)

4 SERVOCYLINDERS TYPE CKM - PROGRAMMABLES

4.1 Magnetosonic transducers - basic working principles

The magnetosonic transducer is composed by: a waveguide element ① fixed to the cylinder's body, a permanent magnet ② rigidly connected to the cylinder's rod and an integral electronics signal conditioning ③ located on the rear head.

The position measurement is based upon the magnetostriction phenomenon: the electronics signal conditioning ③ generates a short current pulse that travels through the waveguide ①. When this pulse meets the magnetic field of the permanent magnet ②, a torsional wave is generated and it travels back to the electronics signal conditioning.

The position of the moving magnet is thus accurately determined by measuring the elapsed time between the application of the current pulse and the arrival of the torsional wave, thanks to their constant ultrasonic speed. Sensor electronics signal conditioning transforms this measurement into the output feedback signal.

The contactless construction of the position transducer ensures a long working life and allows its use even in hard environmental conditions (shocks, vibrations etc.) or high working frequencies.

The transducer can be replaced without disassembling the cylinder, providing a great advantage of easy and quick maintenance.

Additionally, the only electronics signal conditioning can be easily removed and replaced without removing its case; in this way the cylinder could keep on working avoiding any production-stop time.

CKM servocylinders are characterized by high performances and they are available in several versions.

4.2 Output signal

The transducer integral electronics is available with the following configurations:

Analog

A = 4-20 mA
V = 0-10 V

Digital SSI

Q = Binary 24 bit
R = Binary 25 bit
S = Gray 24 bit
U = Gray 25 bit

Example of model code: CKM/00-63/45*0500-X008 -AD-B1X1

Other output ranges are available on request, contact our technical office.

4.3 Transducer features

CKM are equipped with "MTS"'s magnetosonic transducers, whose main features are shown in the table at side. The integral position transducer is also available with an explosion-proof housing, ATEX certified, for use in explosion-hazardous environments.

Other integral position transducers brands are available on request, contact our technical office.

4.4 Electronic connections

The 6 or 7 pin male connector M16 is located on the transducer rear head.

The straight female cable connector ④ is included in the supply:

SP-ST-CO-9131-D06-PG9 6 pin female connector for analog version
SP-ST-CO-9131-D07 7 pin female connector for digital SSI version

See the tables at side for electronic connections.

For other connector types or cable outputs, contact our technical office.

4.5 Strokes

From 100 to 3000 mm by increments of 100 mm.

If a not standard stroke is required, contact our technical office.

4.6 Cylinder features

See sections ⑥, ⑦ and ⑧ for sizes, mounting style and dimensions.

See sections from ⑭ to ⑳ for materials and options.

4.7 Fluid requirements

For the suitable fluids and the proper choice of the sealing system, in relation to the fluid characteristics, see sections ③ and ⑳.

Recommended fluid characteristics:

- Viscosity: 15 ÷ 100 mm²/s
- Temperature range: 0 ÷ 70°C
- Fluid contamination class: ISO 19/16 achievable with in-line filters at 25 µm

4.8 Start-up notes

All the servocylinders with analog output are supplied with the zero/span values adjusted to the cylinder's mechanical stroke ends.

The output signal of the CKM analog or digital SSI versions is programmable by using proper programming tools to be ordered separately:

SP-253-124 for zero/span setting of analog version

SP-253-135 for complete re-programming of the transducers parameters (resolution, output format, length etc.) of digital SSI version

The sensor electronics case is equipped with two LED that indicate the transducer status, allowing a quick recognition of main possible faults (magnet not detected or out of set-up range).

During the start-up it is necessary to bleed off the air from the servocylinder as indicated in section ⑳.

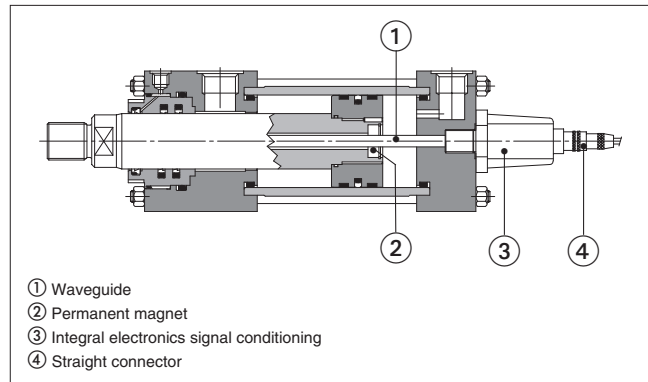
For other details refer to the start-up instructions included in the supply.

4.9 Warnings

Ensure that the servocylinder and wirings are kept away from strong magnetic field and electrical noise to prevent noises on the feedback signal. Check the electronic connections and switch-off the power supply before connecting or disconnecting the position transducer to avoid electronic damages.

It is recommended to connect the draining port, supplied as standard, to the tank without back pressure, see section ⑳ for details.

SERVOCYLINDER TYPE CKM



TRANSDUCER FEATURES

	Analog	Digital SSI
Power supply	24 Vdc (±15%)	
Outputs signal	0÷10 Vbc/ 4÷20 mA	SSI RS 422/485 Standard
Data format (SSI)	NA	Binary / Gray
Data length (SSI)	NA	24 / 25 bit
Resolution	16 bit; 0,0015% (min. 1 µm)	5 µm
Linearity	<±0,01% F.S. (min ±50 µm)	<±0,01% F.S. (min ±40 µm)
Repeatability	<±0,001% F.S. (min ±1 µm)	
Hysteresis	< 4 µm	
Data speed (only for digital)	70 kBd÷1MBd (depending to cables length)	
Update frequency	0,5÷2kHz (depending to the stroke)	0,5÷3,7kHz (depending to the stroke)
Temperature coefficient	< 30 ppm/°C	< 15 ppm/°C
Connection type	6 pin connector M16 to DIN45322	7 pin connector M16 to DIN45329
Protection degree	IP67 to DIN 40050	
Shock resistance	100g (single hit) / IEC Standard 68-2-27	
Vibration resistance	15g/10÷2000 Hz / IEC Standard 68-2-6	
Polarity protection	up to -30 VDC	
Operating temperature	-20 ÷ +75 °C	
Measuring range	100 to 3000 mm	
Maximum speed	2m/s	

ELECTRONIC CONNECTIONS - ANALOG

6 PIN female connector (to solder)	PIN	SIGNAL	NOTES
<p>SP-ST-CO-9131-D06-PG9 (Transducer view)</p>	1	Vout	Output - analog signal
	2	AGND	Gnd - analog signal
	3	NC	Do not connect
	4	NC	Do not connect
	5	V+	Input - power supply 24 VDC (±15%)
	6	V0	Gnd - power supply 0 VDC

ELECTRONIC CONNECTIONS - DIGITAL SSI

7 PIN female connector (to solder)	PIN	SIGNAL	NOTES
<p>SP-ST-CO-9131-D07 (Transducer view)</p>	1	DATA -	Input - serial position data (-)
	2	DATA +	Output - serial position data (+)
	3	CLOCK +	Output -serial synchronous clock (+)
	4	CLOCK -	Input - serial synchronous clock (-)
	5	V+	Input - power supply 24 VDC (±15%)
	6	V0	Gnd - power supply 0 VDC
	7	NC	Do not connect

5 SERVOCYLINDERS TYPE CKM - PROGRAMMABLES

with fieldbus interface PROFIBUS DP or CANopen

5.1 Working basic principles

CKM servocylinders (see section 4) for magnetosonic working principle) are also available with fieldbus communication interface. Field communication networks allow to exchange a great amount of data among all the devices installed on the machines and industrial plants (servocylinders, valves, pumps, motors, etc.) by means of just one cable. It is so possible to connect all the devices of the system to the machine control unit (fieldbus master) avoiding expensive wirings and start-up costs. Fieldbus provides also a more efficient connection that can speed up the installation task as well as prevent wiring errors. The possibility to perform system level diagnostics on each node or device in the system represents an optimum maintenance tool and it has a positive impact on the system performances. The remarkable aspect of these communication networks is the common standardized language ("protocol") of all the connected devices, making the control and monitoring of the whole machine very easy.

5.2 Output signal

The available feedback protocols are:

P = PROFIBUS DP according to EN 50 170 (ISO 74498)

C = CANopen according to CiA standard DS-301 V4.02 (ISO-DIS11898)

Example of model code: CKM/00-63/45*0500-X008 -DP-B1X1

Other feedback protocols are available on request, contact our technical office.

5.3 Transducer features

CKM are equipped with "MTS"s magnetosonic transducers whose features are shown in the table at side. Other integral position transducers brands are available on request, contact our technical office.

5.4 Electronic connections

Male and female connectors are located on the transducer rear head. The cable connectors are included in the supply:

CANopen - 2 connectors

SP-ST-CO-9131-D06-PG9 6 pin female M16 connector for bus input

SP-ST-CO-9131-D06-PG9 6 pin female M16 connector for bus output

PROFIBUS DP - 4 connectors

SP-560884 5 pin male M12 connector for bus input

SP-560885 5 pin female M12 connector for bus output

SP-560888 5 pin female M12 for bus terminator

SP-560886 4 pin female M8 connector for power supply

See the table at side for electronic connections..

For other connector types, contact our technical office.

5.5 Strokes

From 100 to 3000 mm by increments of 100 mm.

If a not standard stroke is required, contact our technical office.

5.6 Cylinder features

See sections 6, 7 and 8 for sizes, mounting style and dimensions. See sections from 14 to 21 for materials and options.

5.7 Fluid requirements

For the suitable fluids and the proper choice of the sealing system, in relation to the fluid characteristics, see sections 3 and 20. Recommended fluid characteristics:

- Viscosity: 15 ÷ 100 mm²/s

- Temperature range: 0 ÷ 70°C

- Fluid contamination class: ISO 19/16 achievable with in-line filters at 25 µm

5.8 Start-up notes

The transducer's fieldbus configuration files and the manual for start-up are included in the supply.

The setup of the transducer's slave address is usually done by the bus standard service of the system: if the fieldbus master does not support this service, the setting can be done by a proper programmer tool to be separately ordered:

SP-252-382-D62 for CANopen protocol

SP-252-173-D52 for PROFIBUS DP protocol

The sensor electronics case is equipped with two LED that indicate the transducer status, allowing a quick recognition of main possible faults (magnet not detected or out of set-up range).

During the start-up it is necessary to bleed off the air from the servocylinder as indicated in section 22.

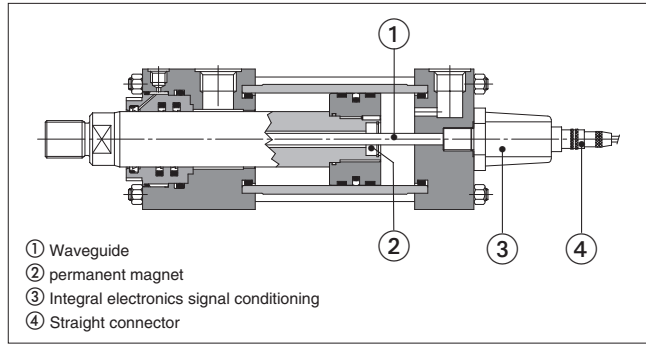
For other details refer to the start-up instructions included in the supply.

5.9 Warnings

Ensure that the servocylinder and wirings are kept away from strong magnetic field and electrical noise to prevent noises on the feedback signal. Check the electronic connections and switch-off the power supply before connecting or disconnecting the position transducer to avoid electronic damages.

It is recommended to connect the draining port, supplied as standard, to the tank without back pressure, see section 23 for details.

SERVOCYLINDER TYPE CKM



TRANSDUCER FEATURES

Power supply	24 Vdc (±15%)
Data transmission rate (with cable L < 25 m and 1 node)	PROFIBUS DP: max. 12 MBit/s CAN open: max. 1000 KBit/s
Cycle time	1 ms with stroke up to 2000 mm
Resolution (selectable by Bus)	5 µm for CANopen ; 1 µm for PROFIBUS DP
Linearity	<±0,01% F.S. (min ±50 µm)
Repeatability	<±0,001% F.S. (min ±2,5 µm)
Hysteresis	< 4 µm
Temperature coefficient	< 15 ppm/°C
Shock resistance	100g (single hit) / IEC Standard 68-2-27
Vibration resistance	15g/10÷2000 Hz / IEC Standard 68-2-6
Overvoltage protection	Up to 36 VDC
Protection degree	IP67 to DIN 40050
Operating temperature	-20 ÷ +75 °C
Measuring range	100 to 3000 mm
Maximum speed	2m/s

ELECTRONIC CONNECTIONS - CANopen

6 PIN female connector (to solder)	PIN	SIGNAL	NOTES
	1	CAN_L	Bus line (low)
	2	CAN_H	Bus line (high)
	3	NC	Do not connect
	4	NC	Do not connect
	5	V+	Power supply 24 VDC (±15%)
	6	CAN_GND	Signal zero data line (0V)
SP-ST-CO-9131-D06-PG9 (Transducer view)			

ELECTRONIC CONNECTIONS - PROFIBUS DP

5 PIN connectors (to screw)	PIN	SIGNAL	NOTES
	1	+ 5V	for bus termination *
	2	LINE-B	RxD/TxD-N (BUS)
	3	DGND	data line and termination signal zero *
	4	LINE-A	RxD/TxD-P (BUS)
	5	SCHIELD	
SP-560884 male (Transducer view) SP-560885 female (Transducer view)			
4 PIN female connector (to solder)	PIN	SIGNAL	NOTES
	1	V+	Input - power supply 24 VDC (±15%)
	2	NC	Do not connect
	3	V0	Gnd - power supply 0 VDC
	4	NC	Do not connect
SP-560886 (Transducer view)			

* Female only

6 INSTALLATION DIMENSIONS [mm] FOR SERVOCLINDERS TYPE CKF, CKM

Ø Bore	40	50	63	80	100	125	160	200
Ø Rod	28	36	45	56	70	90	110	140
A	28	36	45	56	63	85	95	112
A1 (option H)	18	22	28	36	45	56	63	85
AA	59	74	91	117	137	178	219	269
B f9	42	50	60	72	88	108	133	163
BB	35	46	46	59	59	81	92	115
BG min	12	18	18	24	24	27	32	40
CH	22	30	39	48	62	80	100	128
CO N9	12	12	16	16	16	20	30	40
DD 6g	M8x1	M12x1,25	M12x1,25	M16x1,25	M16x1,25	M22x1,5	M27x2	M30x2
D (1)	25	29	29	36	36	42	42	52
E	63	75	90	115	130	165	205	215
EE standard (1)	G 3/8	G 1/2	G 1/2	G 3/4	G 3/4	G 1	G 1	G 1 1/4
EE option D, Y (1)	G 1/2	NA	NA	G 1	G1	G1 1/4	NA	NA
F	10	16	16	20	22	22	25	25
FB H13	11	14	14	18	18	22	26	33
GA	55	61	61	70	72	80	83	101
KC	4	4,5	4,5	5	6	6	8	8
KK standard	M20 x 1,5	M27 x 2	M33 x 2	M42 x 2	M48 x 2	M64 x 3	M80 x 3	M100 x 3
KK1 option H	M14 x 1,5	M16 x 1,5	M20 x 1,5	M27 x 2	M33 x 2	M42 x 2	M48 x 2	M64 x 3
LH h10	31	37	44	57	63	82	101	122
PJ	85	74	80	93	101	117	130	165
R js13	41	52	65	83	97	126	155	190
RD	62	74	88	105	125	150	170	210
RT	M8x1,25	M12x1,75	M12x1,75	M16x2	M16x2	M22x2,5	M27x3	M30x3,5
SB H13	11	14	18	18	26	26	33	39
SS	110	92	86	105	102	131	130	172
ST js13	12,5	19	26	26	32	32	38	44
TC h14	63	76	89	114	127	165	203	241
TD f8	20	25	32	40	50	63	80	100
TG js13	41,7	52,3	64,3	82,7	96,9	125,9	154,9	190,2
TM h14	76	89	100	127	140	178	215	279
TO js13	87	105	117	149	162	208	253	300
TS	83	102	124	149	172	210	260	311
UM	108	129	150	191	220	278	341	439
UO max	110	130	145	180	200	250	300	360
US	103	127	161	186	216	254	318	381
UT	95	116	139	178	207	265	329	401
UW	70	88	98	127	141	168	205	269
VD	12	9	13	9	10	7	7	7
VE	22	25	29	29	32	29	32	32
VL	3	4	4	4	5	5	5	5
WF	35	41	48	51	57	57	57	57
WH	25	25	32	31	35	35	32	32
XG	57	64	70	76	71	75	75	85
XS	45	54	65	68	79	79	86	92
XV (2)	Minimum stroke	5	15	20	20	35	35	35
	min	100	109	120	129	148	155	161
	max	99+stroke	98+stroke	100+stroke	115+stroke	117+stroke	134+stroke	141+stroke
Y	62	67	71	77	82	86	86	98
ZB max	178	184	192	212	225	260	279	336

NOTES TO TABLE

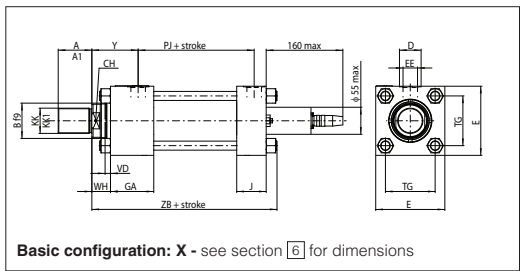
(1) Oil ports are threaded according to ISO 1179-1 (GAS standards) with counterbore dimension D. Oversized oil ports are available depending to the bore, see dimensions EE for options D (front oversized oil port) or Y (rear oversized oil port)

(2) XV - For cylinders with mounting style L the stroke must always exceed the minimum values reported in the table.

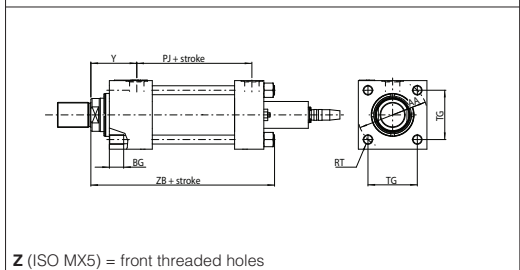
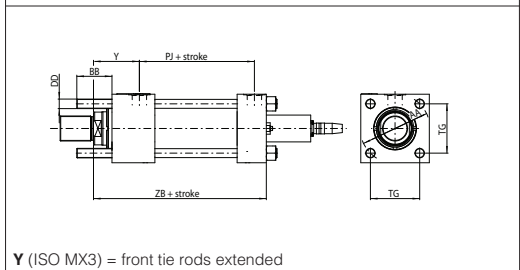
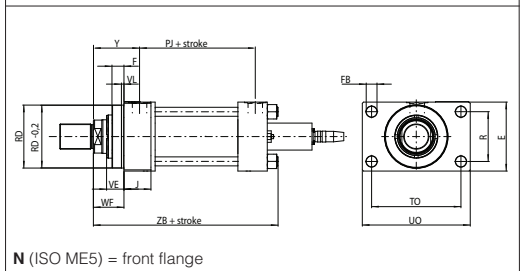
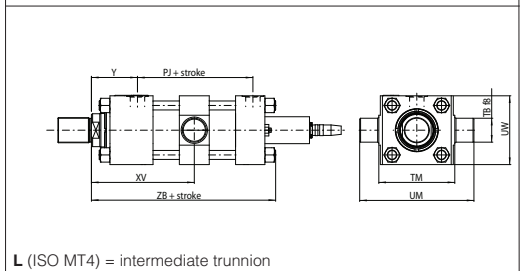
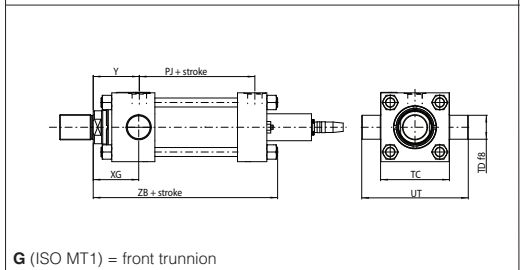
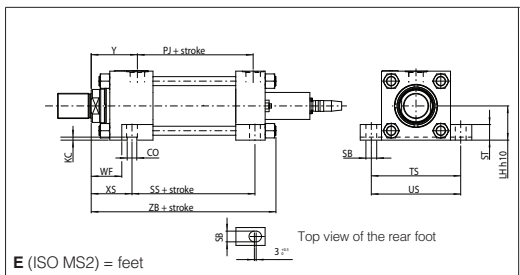
The requested XV value must be included between XV min and XV max and it must be always indicated, with dimension in millimeters, together with the cylinder code. See the following example:

CKM/00-50/36*0500-L208 - D - B1E3X1
XV = 200

7 BASIC CONFIGURATION



8 MOUNTING STYLE FOR SERVOCYLINDERS TYPE CKF, CKM



9 SERVOCYLINDERS TYPE CKP

9.1 Potentiometric transducers - basic working principles

The potentiometric transducer is composed by two resistive tracks ① and a wiper ② which realizes the sliding contact through two metallic brushes. The resistive track is an aluminium element with a conductive plastic coating fixed to the cylinder's rear head. The wiper is mounted on the piston rod and moves together with it.

The tracks of the potentiometer have to be connected to a stabilized DC voltage to allow a small current flow. The two brushes of the wiper close the electronic circuit with the tracks (see figure at side), changing the resistance value and thus the voltage output proportionally to the rod position (principle of potential divider).

CKP servocylinders present the best price/performance ratio. Their compact construction allows the easy application of servocylinders in place of a standard cylinders without transducer.

9.2 Transducer features

For all the transducer features see the table at side

9.3 Electronic connections

The 4 pin male connector is mounted on side 4 of the cylinder rear head for all mounting styles except style E (ISO MS2), where it is mounted along the cylinder axis, see section 13.

The straight female cable connector ③ **SP-PT-06W-8-4S** is included in the supply.

See the table at side for electronic connections.

9.4 Strokes

From 100 to 900 mm by increments of 100 mm.

If a not standard stroke is required, contact our technical office.

9.5 Cylinder features

See sections 11, 12 and 13 for sizes, mounting style and dimensions.

See sections from 14 to 21 for materials and options.

9.6 Fluids requirements

CKP servocylinders are suitable for operation with mineral oils with or without additives (**HH, HL, HLP, HLP-D, HM, HV**).

For the proper choice of the sealing system, in relation to the fluid characteristics, see section 20.

Recommended fluid characteristics:

- Viscosity: 15 ÷ 100 mm²/s
- Temperature range: 0 ÷ 70°C
- Fluid contamination class: ISO 19/16 achieved with in-line filters at 25 µm

9.7 Start-up notes

During the start-up it is necessary to bleed off the air from the servocylinder. The air bleed is located on the rod end, see figure at side.

For a proper use of the air-bleed unlock the grub screw ④ M8 x 10 with a wrench for hexagonal head screws, moves the cylinder for the necessary cycles to bleed-off the air and retighten by a torque of 20 Nm.

Take care to completely bleed off the air from the inside because the compressibility effects of the air trapped-in may compromise the contact between the brushes and the resistive tracks.

Ensure to bleed off the air after every long time stop of the servocylinder.

For other details refer to the start-up instructions included in the supply.

9.8 Warnings

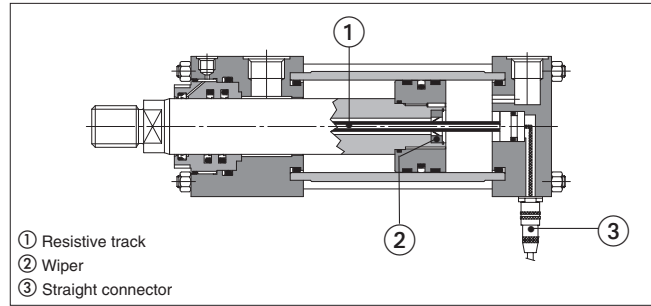
For a correct functioning, the transducer must be exclusively used as a potential divider.

Ensure to observe the maximum rating power indicated in the table "transducer features" to avoid any component damage.

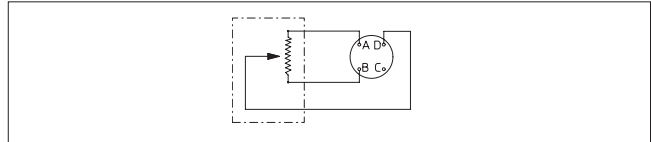
The power supply must be stabilized: variations on the voltage provided have direct influence on the output values.

It is recommended to connect the draining port, supplied as standard, to the tank without back pressure, see section 23 for details.

SERVOCYLINDER TYPE CKP



ELECTRONIC CIRCUIT



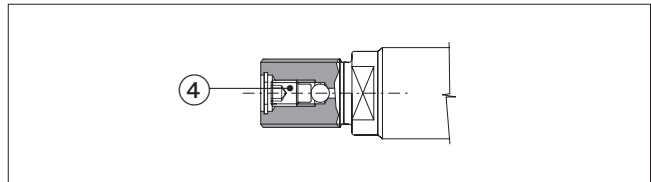
TRANSDUCER FEATURES

Supply reference	10 Vdc recommended (max 30 Vdc)
Maximum power rating	0,3 W/cm at 25°C. 0 W at 125°C
Linearity	±0,1% F.S.
Repeatability	±0,05% F.S.
Total resistance	150 Ω/cm
Insulation resistance	> 1000 MΩ to 500 Vdc
Wiper current	Recommended: a few µA (1mA max)
Temperature limits	-20 ÷ + 75°C
Connection type	4 pin connector to Mil-C-26482
Protection degree	IP65 to DIN 40050
Measuring range	100 to 900 mm
Maximum speed	0,5 m/s

ELECTRONIC CONNECTIONS

4 PIN female connector (to solder)	PIN	WIRING	SIGNAL	NOTES
<p>SP-PT-06W-8-4S (Transducer view)</p>	A	yellow	V0	Gnd - power supply 0 VDC
	B	green	Vref	Input - power supply 10 VDC
	C	-	NC	Do not connect
	D	red	Vout	Output - 0 - 10 V

ROD AIR BLEED



10 SERVOCYLINDERS TYPE CKV

10.1 Inductive transducers - basic working principles

The transducer is composed by a single coil-winding ① and a ferromagnetic core ②. The coil-winding is integrated into a tube fixed to the cylinder's rear head, the core is fixed to the piston rod and moves together with it.

When the core moves together with the piston, the inductance of the coil-winding changes proportionally to the core position. The separate electronic conditioning card sends a sinusoidal signal to the primary coil-winding, it reads the corresponding signal of the secondary coil-winding and, from their difference, it calculates the inductance and computes the analog output feedback signal.

The contactless principle of the transducer ensures a long working life and its ruggedness construction allows to withstand high frequencies or dynamical stresses (i.e. simulators, vibropresses etc.).

The compact construction of CKV allows the easy application of the servocylinders in place of cylinders without transducer.

The separate conditioning card makes the inductive transducer ideal for all applications with high temperatures: in this case the max temperature is limited by the sealing system.

10.2 Transducer features

CKV are equipped with "Penny & Giles"'s ICT inductive transducers whose features are shown in the table at side.

The performances of the transducer indicated in the table at side refer exclusively to the use with its proper conditioning card.

10.3 Electronic conditioning card

The electronic conditioning card is not included in the supply and has to be ordered separately. Two types of electronic conditioning card are available:

SP-EICT/VM (voltage output 0-10V)

SP-EICT/CM (current output 4-20mA)

Both have the possibility to adjust the zero and gain references.

The card format fits to DIN EN50022 or EN50035 rails or allows a wall mounting by 4 screws M5x30.

Other output ranges are available on request, contact our technical office.

10.4 Electronic connections

The 4 pin male connector is mounted on side 4 of the cylinder rear head for all mounting styles except style E (ISO MS2), where it is mounted along the cylinder's axis, see section 13.

The straight female cable connector ③ **SP-PT-06W-8-4S** is included in the supply.

See the table at side for electronic connections.

10.5 Strokes

From 100 to 1000 mm by increments of 100 mm.

If a not standard stroke is required, contact our technical office.

10.6 Cylinder features

See sections 11, 12 and 13 for sizes, mounting style and dimensions.

See sections from 14 to 21 for materials and options.

10.7 Fluid requirements

CKV servocylinders are suitable for operation with mineral oils with or without additives (**HH, HL, HLP, HLP-D, HM, HV**), fire resistant fluids (**HFA** oil in water emulsion - 90-95% water and 5-10% oil, **HFB** water in oil emulsion - 40% water, **HFC** water glycol - max 45% water) and synthetic fluids (**HFD-U** organic esters, **HFD-R** phosphate esters).

For the proper choice of the sealing system, in relation to the fluid characteristics, see section 20.

Recommended fluid characteristics:

- Viscosity: 15 ÷ 100 mm²/s
- Temperature range: 0 ÷ 70°C
- Fluid contamination class: ISO 19/16 achieved with in-line filters at 25 µm

10.8 Start-up notes

During the start-up it is necessary to bleed off the air from the servocylinder as indicated in section 22.

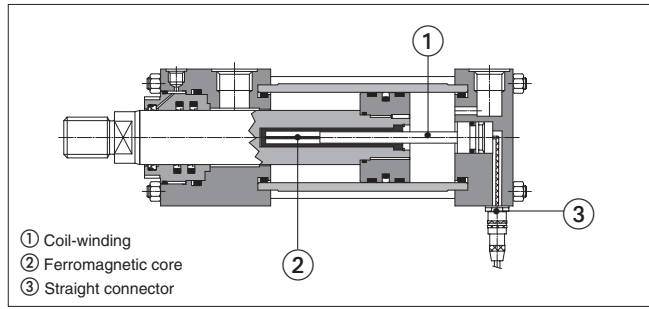
For other details refer to the start-up instructions included in the supply.

10.9 Warnings

Ensure that the maximum distance between the servocylinder and the conditioning card is lower than the recommended one: 25 m.

It is recommended to connect the draining port, supplied as standard, to the tank without back pressure, see section 23 for details.

SERVOCYLINDER TYPE CKV



- ① Coil-winding
- ② Ferromagnetic core
- ③ Straight connector

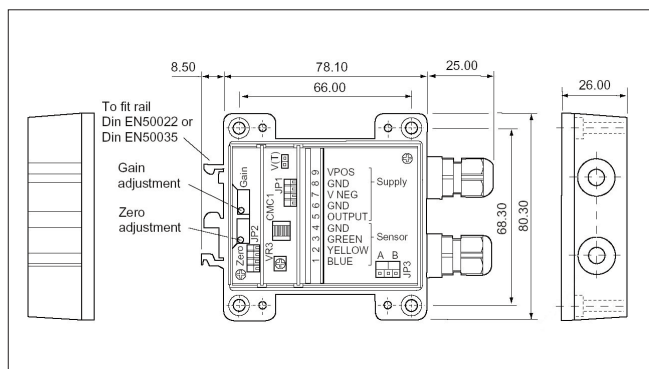
TRANSDUCER FEATURES

Linearity	±0,2%
Repeatability	±0,05 %
Insulation resistance	>50 MΩ to 50 Vdc
Temperature coefficient	±200 ppm/°C from -20 to +100°C
Operating temperature	-20 ÷ +120°C
Connection type	4 pin connector to Mil-C-26482
Protection degree	IP65 to DIN 40050
Measuring range	100 to 1000 mm
Maximum speed	1 m/s

ELECTRONIC CONNECTIONS

4 PIN female connector (to solder)	PIN	WIRING	SIGNAL	NOTES
<p>SP-PT-06W-8-4S (Transducer view)</p>	A	yellow	Ve+	Coil V+
	B	green	V0	Sensor ground
	C	-	NC	Do not connect
	D	blue	Ve-	Coil V-

ELECTRONIC CONDITIONING CARD



	SP-EICT/VM	SP-EICT/CM
Supply voltage	from 13,5 to 30 Vdc	from 10 to 30 Vdc
Supply current	19 mA max	12,6 mA max
Output	0÷10 Vdc	4÷20 mA
Zero adjustment range	-10% to +60% of span	
Gain adjustment range	+40% to +110% of span	
Output ripple	< 5 mV rms	
Output load	10 kΩ min.	
Operating temperature	0 ÷ +70°C (storage -40 ÷ +85°C)	
Temperature coefficient	300 ppm/°C	
Protection degree	IP66 to DIN 40050	

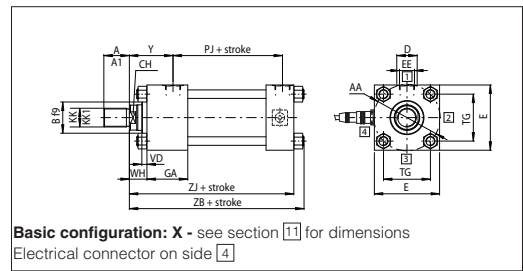
11 INSTALLATION DIMENSIONS [mm] FOR SERVOCLINDERS TYPE CKP, CKV

Ø Bore	40	50	63	80	100	125	160	200	
Ø Rod	28	36	45	56	70	90	110	140	
A	28	36	45	56	63	85	95	112	
A1 option H	NA	NA	NA	36	45	56	63	85	
AA	59	74	91	117	137	178	219	269	
B f9	42	50	60	72	88	108	133	163	
CB A16	20	30	30	40	50	60	70	80	
CD	14	20	20	28	36	45	56	70	
CF	40	60	60	80	100	120	140	160	
CH	22	30	39	48	62	80	100	128	
CO N9	12	12	16	16	16	20	30	40	
CX	value	20	25	30	40	50	60	80	100
	tolerance	0 -0,012			0 -0,015		0 -0,02		
D (1)	25	29	29	36	36	42	42	52	
E	63	75	90	115	130	165	205	245	
EE (1)	G 3/8	G 1/2	G 1/2	G 3/4	G 3/4	G 1	G 1	G 1 1/4	
EP	13	17	19	23	30	38	47	57	
EW h14	20	30	30	40	50	60	70	80	
F	16	20	22	28	35	44	55	70	
FH	10	16	16	20	22	22	25	25	
FB H13	11	14	14	18	18	22	26	33	
GA	55	61	61	70	72	80	83	101	
J	38	38	38	45	45	58	58	76	
KC	4	4,5	4,5	5	6	6	8	8	
KK	M20x1,5	M27x2	M33x2	M42x2	M48x2	M64x3	M80x3	M100x3	
KK1 option H	NA	NA	NA	M27x2	M33x2	M42x2	M48x2	M64x2	
L	19	32	32	39	54	57	63	82	
LH h10	31	37	44	57	63	82	101	122	
LT min	25	31	38	48	58	72	92	116	
MR max	17	29	29	34	50	53	59	78	
MS max	29	33	40	50	62	80	100	120	
PJ	85	74	80	93	101	117	130	165	
R js13	41	52	65	83	97	126	155	190	
RD	62	74	88	105	125	150	170	210	
SB H13	11	14	18	18	26	26	33	39	
SS	110	92	86	105	102	131	130	172	
ST js13	12,5	19	26	26	32	32	38	44	
TC h14	63	76	89	114	127	165	203	241	
TD f8	20	25	32	40	50	63	80	100	
TG js13	41,7	52,3	64,3	82,7	96,9	125,9	154,9	190,2	
TM h14	76	89	100	127	140	178	215	279	
TO js13	87	105	117	149	162	208	253	300	
TS	83	102	124	149	172	210	260	311	
UM	108	129	150	191	220	278	341	439	
UO max	110	130	145	180	200	250	300	360	
US	103	127	161	186	216	254	318	381	
UT	95	116	139	178	207	265	329	401	
UW	70	88	98	127	141	168	205	269	
VD	12	9	13	9	10	7	7	7	
VE	22	25	29	29	32	29	32	32	
VL	3	4	4	4	5	5	5	5	
WF	35	41	48	51	57	57	57	57	
WH	25	25	32	31	35	35	32	32	
XC	184	191	200	229	257	289	308	381	
XG	57	64	70	76	71	75	75	85	
XO	190	190	206	238	261	304	337	415	
XS	45	54	65	68	79	79	86	98	
XV (2)	Minimum stroke	5	15	20	20	35	35	35	
	min	100	109	120	129	148	155	161	195
	max	99+stroke	98+stroke	100+stroke	115+stroke	117+stroke	134+stroke	141+stroke	166+stroke
Y	62	67	71	77	82	86	86	98	
ZB max	178	176	185	212	225	260	279	336	
ZJ	165	159	168	190	203	232	245	299	

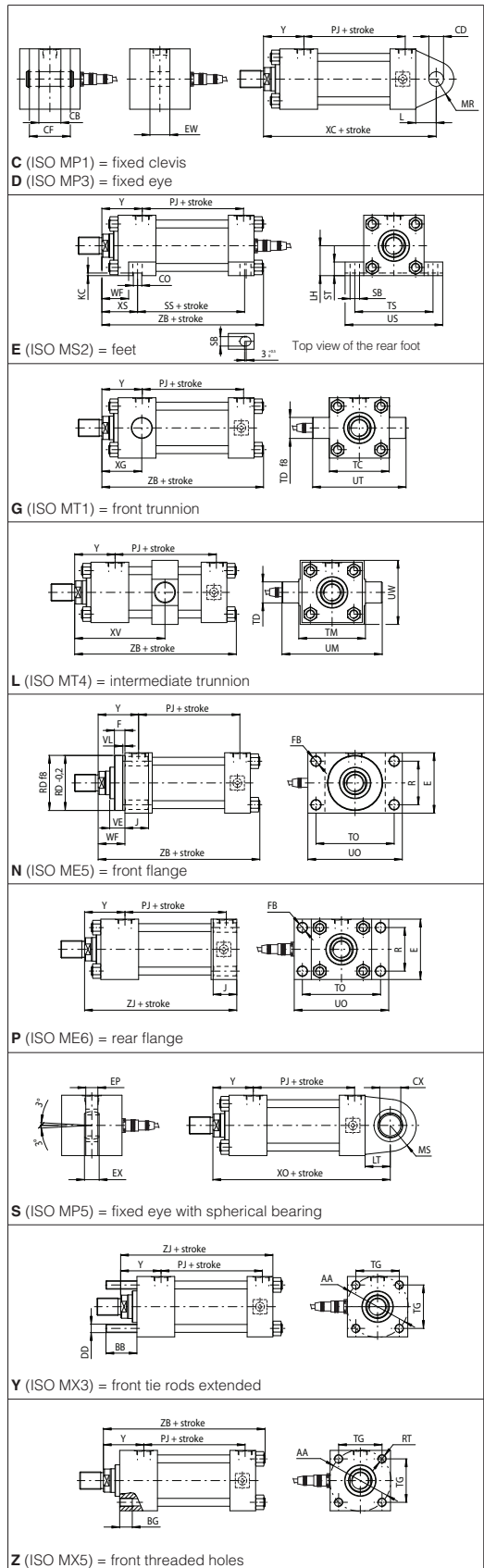
NOTES TO TABLE

- Oil ports with dimension EE are threaded according to ISO 1179-1 (GAS standards) with counterbore dimension D.
- XV** - For cylinders with mounting style **L** the stroke must always exceed the minimum values reported in the table. The requested XV value must be included between **XV min** and **XV max** and it must be always indicated, with dimension in millimeters, together with the cylinder code. See the following example:
CKP/00-50/36*0500-L208 - K - B1E3X1
XV = 200

12 BASIC CONFIGURATION

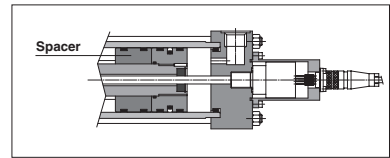


13 MOUNTING STYLES FOR SERVOCYLINDERS TYPE CKP, CKV



14 SPACER

For strokes longer than 1000 mm, proper spacers have to be introduced in the cylinder's construction to increase the rod and piston guide and to protect them from overloads and premature wear. Spacers can be omitted for cylinders working in traction mode. The introduction of spacers increases the overall cylinder's dimensions: spacers' length has to be added to all stroke dependent dimensions in sections [6] and [1].



15 CYLINDER'S HOUSING FEATURES

The cylinder's housings are made in "cold drawn and stressed steel" with $R_s = 450 \text{ N/mm}^2$; the internal surfaces are lapped: diameter tolerance H8, roughness $R_a \leq 0,25 \mu\text{m}$.

16 TIE RODS FEATURES

The cylinder's tie rods are made in "normalized automatic steel" with $R_s = 610 \text{ N/mm}^2$; end-threads are rolled to improve the fatigue working life. They are screwed to the heads or mounted by means of nuts with a prefixed tightening torque MT, see the table at side.

17 RODS FEATURES and options

The rods materials have high strength, which provide safety coefficients higher than 4 in static stress conditions, at maximum working pressure. The rod surface is chrome plated: diameter tolerances f7; roughness $R_a \leq 0,25 \mu\text{m}$. Corrosion resistance of 100 h in neutral spray to ISO 9227 NSS

Ø Rod	Material	Rs min [N/mm ²]	Chrome	
			thickness [mm]	hardness [HV]
28÷90	hardened and tempered alloy-steel	700	0,020	850-1150
110÷140	alloy steel	450		

Rod diameters from 28 to 70 mm have rolled threads; in rolling process the component material is stressed beyond its yield point, being deformed plastically. This offers many technical advantages: higher profile accuracy, improved fatigue working life and high wear resistance. The rod and piston are mechanically coupled by a threaded connection in which the thread on the rod is at least equal to the external thread KK, indicated in the tables [6] and [1]. The piston is screwed to the rod by a prefixed tightening torque in order to improve the fatigue resistance. The stop pin ① avoids the piston unscrewing.

Contact our technical office in case of heavy duty applications.

Rod corrosion resistance and hardness can be improved selecting the options **K** and **T**:
K = Nickel and chrome-plating (only for rods from 28 to 110 mm, for pressure up to 100 bar)
 Corrosion resistance (rating 10 to ISO 10289):

- 350 h in acetic acid salt spray to ISO 9227 AASS
- 1000 h in neutral spray to ISO 9227 NSS

T = Induction surface hardening and chrome plating:
 • 56-60 HRC (613-697 HV) hardness

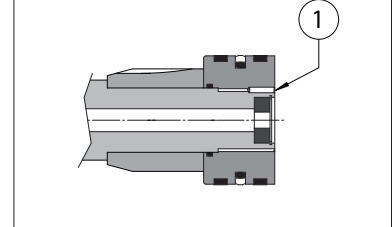
RECOMMENDED SPACERS [mm]

Stroke	1001 ÷ 1500	1501 ÷ 2000	2001 ÷ 2500	2501 ÷ 3000
Spacer code	2	4	6	8
Length	50	100	150	200

TIE RODS TIGHTENING TORQUES

Ø Bore	40	50	63	80
MT [Nm]	20	70	70	160
Wrench	13	19	19	24
Ø Bore	100	125	160	200
MT [Nm]	160	460	820	1160
Wrench	24	32	41	46

ROD-PISTON COUPLING

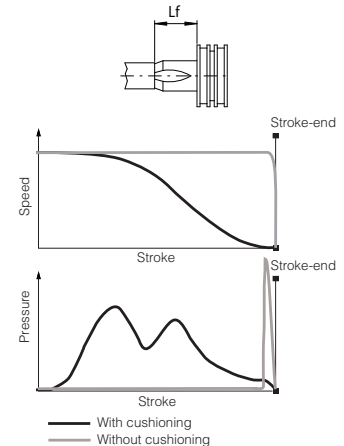


18 CUSHIONINGS

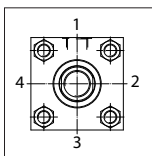
Cushionings are recommended for applications where: • the piston makes a full stroke with speed over than 0,05 m/s; • it is required to reduce undesirable noise and mechanical shocks; • vertical application with heavy loads. The stroke-end cushionings are hydraulic dampers specifically designed to dissipate the energy of the mass connected to the cylinder rod, by progressively increasing the pressure in the cushioning chamber and thus reducing the rod speed before the cylinder's mechanical stroke-end (see the graphics at side). See **tab. B015** for the max damping energy. The cylinder is provided with needle valve to optimize cushioning performances in different applications. The regulating screws are supplied fully screwed in (max cushioning effect). In case of high masses and/or very high operating speeds we recommend to back them off to optimize the cushioning effect. The adjustment screw has a special design to prevent unlocking and expulsion. The cushioning effect is highly ensured even in case of variation of the fluid viscosity.

Ø Bore	63	80	100	125	160	200
Ø Rod	45	56	70	90	110	140
Cushioning length [mm]	Lf	27	29	27	25	34

Lf is the total cushioning length. When the stroke-end cushionings are used as safety devices, to mechanically preserve the cylinder and the system, it is advisable to select the cylinder's stroke longer than the operating one by an amount equal to the cushioning length Lf; in this way the cushioning effect does not influence the movement during the operating stroke.



19 POSITION OF THE OIL PORTS AND CUSHIONING ADJUSTMENTS

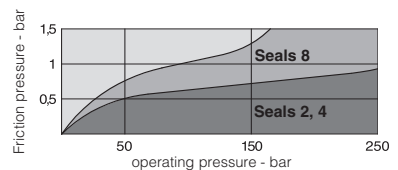


FRONT HEAD: **B1** = oil port position; **E*** = cushioning adjustment position
 REAR HEAD: **X1** = oil port position.
 The oil ports and cushioning adjustment positions are available, respectively, on sides 1 and 3 for all styles except E (see the figure at side): the style E has the cushioning adjustment on side 2.

Example of model code: CKM/00-50/22 *0500-S201 - D - **B1E3X1**

20 SEALING SYSTEM FEATURES

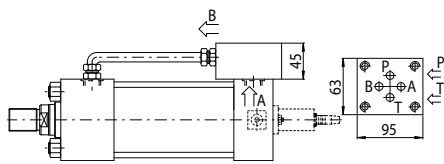
The sealing system must be chosen according to the working conditions of the system: speed, operating frequencies, fluid type and temperature. Seals **2** and **4** not available for CKP. Special sealing system for low temperature, high frequencies (up to 20 Hz), long working life and heavy duty are available on request. All the seals, static and dynamic, must be periodically replaced: proper spare kits are available, see **tab. B137**. Contact our technical office for the compatibility with other fluids not mentioned below and specify type and composition.



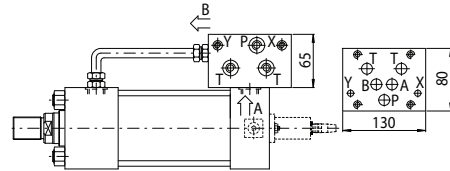
Sealing system	Material	Features	Max speed [m/s]	Fluid temperature range	Fluids compatibility	ISO Standards for seals	
						Piston	Rod
2	FKM + PTFE	very low friction and high temperatures	4	-20°C to 120°C	Mineral oils HH, HL, HLP, HLP-D, HM, HV, fire resistance fluids HFA, HFB, HFD-U, HFD-R	ISO 7425/1	ISO 7425/2
4	NBR + PTFE	very low friction and high speeds	4	-20°C to 85°C	Mineral oils HH, HL, HLP, HLP-D, HM, HV, MIL-H-5606 fire resistance fluids HFA, HFC (water max 45%), HFD-U	ISO 7425/1	ISO 7425/2
8	NBR + PTFE + POLYURETHANE	low friction	1	-20°C to 85°C	Mineral oils HH, HL, HLP, HLP-D, HM, HV	ISO 7425/1	ISO 7425/2

21 INCORPORATED SUBPLATE

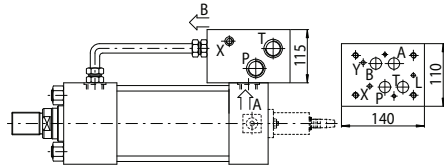
CK* servocylinders can be supplied with ISO (size 06, 10, 16 and 25) incorporated subplates for mounting of valves directly on the cylinder.



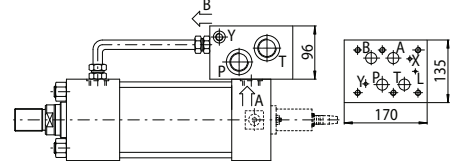
10 = subplate with mounting surface 4401-03-03-0-05 (size 06)
Oil ports P and T = G 3/8
For bores from 40 to 200 and strokes longer than 100 mm
For shorter strokes, the cylinder must be provided with suitable spacer



20 = subplate with mounting surface 4401-05-05-0-05 (size 10)
Oil ports P and T = G 3/4; X and Y = G 1/4
For bores from 40 to 200 and strokes longer than 150 mm
For shorter strokes, the cylinders must be provided with suitable spacer



30 = subplate with mounting surface 4401-07-07-0-05 (size 16)
Oil ports P and T = G 1; L, X and Y = G 1/4
For bores from 80 to 200 and strokes longer than 150 mm
For shorter strokes, the cylinders must be provided with suitable spacer

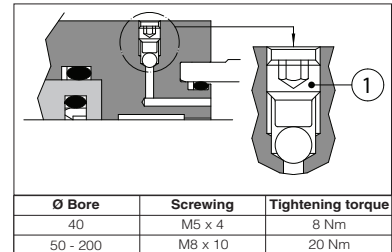


40 = subplate with mounting surface 4401-08-08-0-05 (size 25)
Oil ports P and T = G 1; L, X and Y = G 1/4
For bores from 125 to 200 and strokes longer than 150 mm
For shorter strokes, the cylinders must be provided with suitable spacer

Note: for the choice of suitable spacer see section 14. The addition of spacer length and working stroke must be at least equal or upper than the minimum stroke indicated above, see the following example:
Subplate **20**; working stroke = **70** mm; min. stroke = **150** mm → select spacer **4** (length = **100**mm)

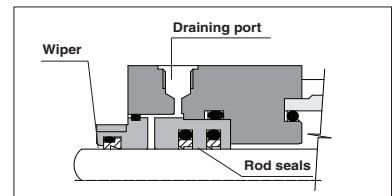
22 AIR BLEEDS

The air in the hydraulic circuit must be removed to avoid noise, vibrations and irregular cylinder's motion: air bleed valves realize this operation easily and safely.
If not otherwise specified, the air bleeds are positioned on side 3, see section 19.
For a proper use of the air-bleed (see figure on side) unlock the grub screw ① with a wrench for hexagonal head screws, moves the cylinder for the necessary cycles to bleed-off the air and retighten as indicated in table at side.



23 DRAINING

The rod side draining reduces the seals friction and increases their reliability.
The draining is positioned on the same side of the oil port, between the wiper and the rod seals (see figure at side).
It is recommended to connect the draining port to the tank without backpressure.
Draining port is G1/8.



24 SERVOCYLINDERS DERIVED FROM SERIES CH, CN, CC

Servocylinders derived from CH (ISO 6020-2 P = 160 bar; **tab. B140**), CH big bores (ISO 6020-3 P = 160 bar; **tab. B160**), CN (ISO 6020-1 P = 160 bar; **tab. B180**) and CC series (ISO 6022 P = 250 bar; **tab. B241**) are available on request. Contact our technical office for details.

BASIC CYLINDER	DERIVED SERVOCYLINDERS	
<p>CH big bore (tab. B160) ISO 6020-3 P_{nom} 160 bar P_{max} 250 bar Ø bore 250÷400 mm Ø rod 140÷220 mm</p>	<p>CHP, CHV - example of style "S"</p>	<p>CHF, CHM - example of style "N"</p>
<p>CN (tab. B180) ISO 6020-1 P_{nom} 160 bar P_{max} 250 bar Ø bore 50÷200 mm Ø rod 36÷140 mm</p>	<p>CNP, CNV - example of style "N"</p>	<p>CNF, CNM - example of style "L"</p>
<p>CC (tab. B241) ISO 6022 P_{nom} 250 bar P_{max} 320 bar Ø bore 50÷400 mm Ø rod 36÷280 mm</p>	<p>CCP, CCV - example of style "S"</p>	<p>CCF, CCM - example of style "A"</p>