

# Mounting subplates type BA-214/\*-AL

multi-station, for valves ISO 4401 size 06, in aluminium

The multi-stations subplates type BA-214/\*-AL for directional control valves are in aluminium and their mounting surface are in accordance with the international standards ISO 4401.

They perform limited pressure drop and are made by a **single subplate** from 1 to 10 stations for directional valves and modular elements ISO 4401 size 06.

Main characteristics: P and T ports = G 1/2; A and B lateral use ports G 3/8; Q<sub>max</sub> = 80 l/min; Q<sub>max</sub> use ports = 60 l/min; Pmax = 210 bar

Note: for versions /M and /MH Q<sub>max</sub> = 35 l/min;

For other technical characteristics, see section 2 and 3.

## 1 MODEL CODE OF SUBPLATES TYPE BA-214/\*-AL

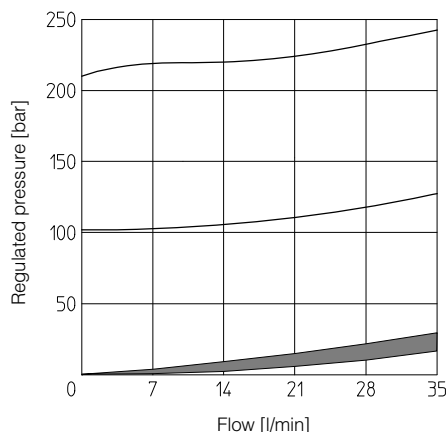
<b>BA-214</b>	/	<b>5</b>	/	<b>/MH</b>	/	<b>210</b>	-	<b>AL</b>	<b>**</b>
Type of subplate: <b>BA-214</b> = for valves ISO size 06 On request, available with rear ports A and B						Series number			
Number of stations: <b>1</b> = one station <b>6</b> = six stations <b>2</b> = two stations <b>7</b> = seven stations <b>3</b> = three stations <b>8</b> = eight stations <b>4</b> = four stations <b>9</b> = nine stations <b>5</b> = five stations <b>10</b> = ten stations						Pressure range of pressure relief valve for versions /M and /MH: <b>100</b> = 100 bar <b>210</b> = 210 bar <b>250</b> = 250 bar			
			/M = with direct operated pressure relief cartridge SP-CART M-5/** - see tab. C010 (available also as spare part)			/MH = with pressure relief valve type SP-CART M-5, arranged with venting solenoid valve			

## 2 TECHNICAL CHARACTERISTICS

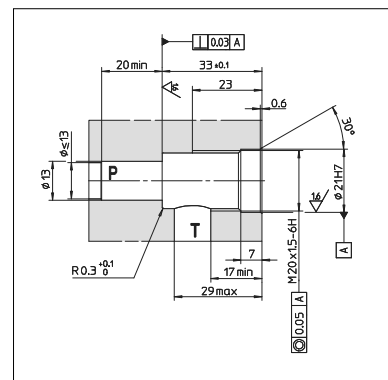
Installation position	Horizontal or vertical position
Ambient temperature	From -20°C to +70°C
Fluid	Hydraulic oil as per DIN 51524 ... 535, for other fluids contact our technical office
Recommended viscosity	15 ÷ 100 mm <sup>2</sup> /s at 40°C (ISO VG 15 ÷ 100)
Fluid contamination class	ISO 19/16 achieved with in line filters at 25µm and β <sub>25</sub> ≥ 75 (recommended only for versions /M and /MH)
Fluid temperature	-20°C +60°C (standard and /WG seals)    -20°C +80°C (/PE seals)

## 3 REGULATED PRESSURE/FLOW DIAGRAM FOR VERSIONS /M and /MH

MAIN CHARACTERISTICS OF ENCLOSED PRESSURE RELIEF VALVE	
Model code	Regulation range
SP-CART M-5/100	3 ÷ 100 bar
SP-CART M-5/210	5 ÷ 210 bar
SP-CART M-5/250	7 ÷ 250 bar
Q <sub>max</sub> = 35 l/min	

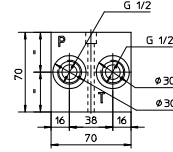
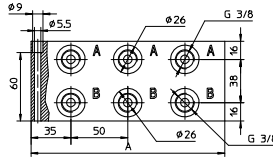
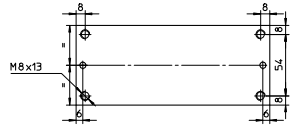
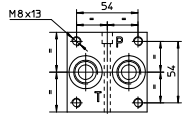
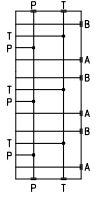


## 4 INSTALLATION DIMENSIONS OF SP-CART M-5/\*\*



5 OVERALL DIMENSIONS OF SUBPLATES TYPE BA-214\*/-AL [mm]

Hydraulic scheme



Ports P and T = G 1/2  
Use ports A and B = G 3/8  
Q<sub>max</sub> = 80 l/min  
Q<sub>max</sub> use ports = 60 l/min  
P<sub>max</sub> = 210 bar

The 3-stations subplate is shown in the drawing

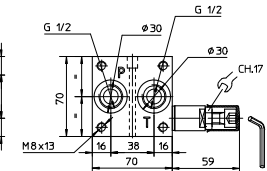
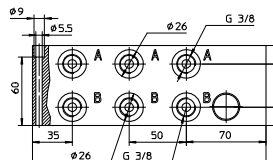
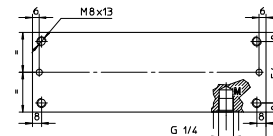
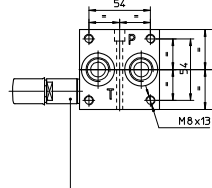
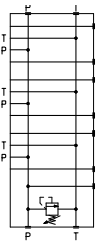
The length of the subplate varies with the number of stations as shown in the table below

Stations	1	2	3	4	5	6	7	8	9	10
Dimension A	70	120	170	220	270	320	370	420	470	520
Mass [Kg]	1	1,4	2	2,6	3,2	3,8	4,4	5	5,6	6,2

Mounting surface  
ISO 4401-03-02-0-05

6 OVERALL DIMENSIONS OF SUBPLATES TYPE BA-214\*/M/-AL [mm]

Hydraulic scheme



Ports P and T = G 1/2  
Use ports A and B = G 3/8  
Q<sub>max</sub> = 35 l/min  
Q<sub>max</sub> use ports = 35 l/min  
P<sub>max</sub> = 210 bar

Pressure relief cartridge  
SP-CART M5 (see tab. C010)

The 3-stations subplate is shown in the drawing

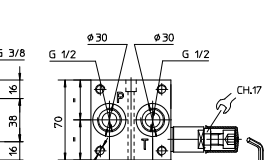
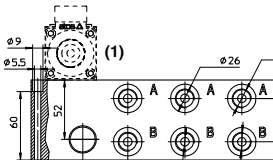
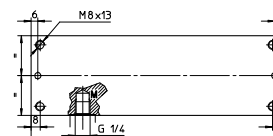
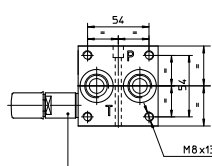
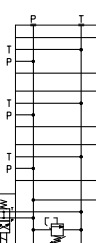
The length of the subplate varies with the number of stations as shown in the table below

Stations	1	2	3	4	5	6	7	8	9	10
Dimension A	105	155	205	255	305	355	405	455	505	555
Mass [Kg]	1,1	1,5	2,1	2,7	3,3	3,9	4,5	5,1	5,7	6,3

Mounting surface  
ISO 4401-03-02-0-05

7 OVERALL DIMENSIONS OF SUBPLATES TYPE BA-214\*/MH/-AL [mm]

Hydraulic scheme



Ports P and T = G 1/2  
Use ports A and B = G 3/8  
Q<sub>max</sub> = 35 l/min  
Q<sub>max</sub> use ports = 35 l/min  
P<sub>max</sub> = 210 bar

Pressure relief cartridge  
SP-CART M5 (see tab. C010)

The 3-stations subplate is shown in the drawing

The length of the subplate varies with the number of stations as shown in the table below

Stations	1	2	3	4	5	6	7	8	9	10
Dimension A	120	170	220	270	320	370	420	470	520	570
Mass [Kg]	1,2	1,6	2,2	2,8	3,4	4	4,6	5,2	5,8	6,4

Mounting surface  
ISO 4401-03-02-0-05

(1) The venting directional valve in the dashed line must be ordered separately